



IF4TM

D8.1 Manual for Contractual and Financial Management

Project Acronym:	IF4TM
Project full title:	Institutional framework for development of the third mission of universities in Serbia
Project No:	561655-EPP-1-2015-1-RS-EPPKA2-CBHE-SP
Funding Scheme:	ERASMUS+
Coordinator:	UKG – University of Kragujevac
Project start date:	October 15, 2015
Project duration:	36 months

Abstract	The main objective of this Manual is to provide support to project partners so that they can manage the project locally in an efficient and successful manner.
----------	--



DOCUMENT CONTROL SHEET

Title of Document:	D8.1 Manual for Contractual and Financial Management
Work Package:	WP8 Project overall management
Last version date:	18/04/2019
Status :	Seventh version
Document Version:	v.07
File Name	D8.1 Manual for Contractual and Financial Management v6.doc
Number of Pages	70
Dissemination Level	Institutional

The European Commission support for the production of this publication does not constitute an endorsement of the contents which reflects the views only of the authors, and the Commission cannot be held responsible for any use which may be made of the information contained therein.



DOCUMENT CONTROL SHEET	2
Introduction	5
CONTRACTUAL MANAGEMENT ON IF4TM PROJECT	6
1. Management structure of IF4TM	6
2. Co-financing principle.....	8
3. Publicity obligations.....	9
3.1 Obligations of the beneficiaries.....	9
3.2 Erasmus+ logo.....	9
3.3 Disclaimer	9
3.4 Penalties in the case of non-compliance with publicity obligations	9
4. Pre-existing rights and ownership and use of the results (including intellectual and industrial property rights).....	11
5. Penalties in the case of poor, partial or late implementation of the action	12
FINANCIAL MANAGEMENT OF THE IF4TM PROJECT	13
6. Technical and financial reporting.....	13
6.1. Basic principles of reporting	13
6.2. Standards of all reports.....	13
6.3. Reporting schedule	14
6.4. Partner financial reports	14
6.5. Partners' technical reports	16
6.6. Partner Request for payment	18
7. Eligibility of costs	19
7.1 Eligible costs	19
7.2 Type of eligible costs	19
7.3. Eligible expenses for Staff costs:	20
7.4. Eligible expenses for Travel costs and costs of Stay	20
7.5. Eligible expenses for equipment	24
7.6. Ineligible costs.....	25
8. Supporting documents.....	25
8.1. Supporting documents for staff cost.....	26
8.2. Supporting documents for travel cost & costs of stay.....	27
8.3. Supporting documents for equipment	27
8.4. Overview of supporting documents per budget heading.....	28
Source: Guidelines for the Use of Grants, VERSION 02: 01 MAY 2016, (Section 3.4)	28
8.5 Rules for designation of reference numbers for supporting documents.....	28
ANNEX 1: Technical report	29
A1-1 STATISTICS AND INDICATORS.....	31



A1-2 TABLE OF ACHIEVED / PLANNED RESULTS	35
ANNEX 2: Partner financial report	52
A2-1 Final Financial Statement	53
A2-2 Staff costs table	54
A2-3 Travel costs & costs of stay table	56
A2-4 Equipment costs table (for PC countries only)	58
A2-5 – Co-financing table.....	60
A2-6 Cash flow – staff table	62
A2-7 Cash flow – travel costs and costs of stay table.....	63
A2-8 Cash flow – equipment table	64
ANNEX 3: Partner Request for payment.....	65
ANNEX 4: Supporting documents	66
A4-1 Joint declaration.....	67
A4-2 Timesheet.....	68
A4-3 Individual Travel Report.....	69
Annex 5 Unit costs for staff, travel and costs of stay defined by EACEA	70



Introduction

Projects such as IF4TM that have large Consortia require an efficient management structure. Most of the rules are defined by the Grant Agreement, but procedures for their practical implementation need to be designed by the participants. This is especially significant in situation when we need to comply the International rules with national legislation.

The main objective of this Manual is to provide support to the beneficiaries so that they can manage the project locally in an efficient and successful manner. By clearly defining the procedures for financial and technical management, the communication between the project coordinator and other beneficiaries will be simplified. Additionally, the beneficiaries will be able to fulfill successfully their contractual obligations and to provide all necessary inputs with high quality to project coordinator whose responsibility is to further incorporate them in reports for the EACEA.

This manual deals with the two types of management: technical and financial management, including reporting and monitoring. It provides the clear picture what the objectives of such management are, the procedures to be followed as well as forms to be filled in.

Additionally, it offers very detailed definition of eligible and ineligible costs. It gives a well-structured preview of all necessary supporting documents that need to be provided in order to justify adequately eligible costs.

Please note that in this Manual some definitions and rules are taken in original form from the Grant Agreement and Guidelines for the Use of the Grant, in order to avoid any misinterpretation. Those sections are specially marked in the textboxes, as the example given below:

7.1 Eligible Costs

As specified in Article II.19.1 of the Agreement, "Eligible costs" of the action are costs actually incurred by the beneficiary which meet the following criteria:

- ✚ they are incurred during the eligibility period, with the exception of costs relating to the preparation of the final report and the corresponding supporting documents referred to in Articles II.23.2 and I.4.1;

Source: "Guidelines for the Use of Grants" (Section 3.2.1)



CONTRACTUAL MANAGEMENT ON IF4TM PROJECT

1. Management structure of IF4TM

The management structure of the IF4TM is designed to ensure effectiveness, decisiveness, flexibility and quality of work and to fit the specific requirements of the Erasmus plus programme for successful realization of planned activities in large Consortium, such as in this project.

The project management structure was established and officially adopted at the kick-off meeting. It involves Contractor, Coordinator, Steering Committee, Project Support Team (3 members) and Quality Assurance Project Team (5 members), as shown in the **Figure 1**.

- **The Project Coordinator** - responsible for overall project management (technical and operational), communication and reporting to EACEA, efficient use of the project grant, etc.
- **Steering Committee (SC)** - decision-making body consisting of one representative (preferably the contact person) from each partner institution. SC will meet approximately twice a year (in combination with other project events due to cost efficiency) to discuss and review the progress of project activities, make decisions, approve deliverables and agree on any risk contingency measures.
- **Project Support Team (PST)** – consisting of three members will be responsible for assisting the Project Coordinator in daily management activities.
- **Quality Assurance Project Team (QAPT)** - consisted of 5 members from partner institutions experienced in quality assurance. The QAPT team will be a direct support to the Project Coordinator in monitoring and assessing the quality of the project and its results, as well as development of Quality Control and Monitoring Manual.
- **WP leaders** - responsible for monitoring of the overall progress of the WP and its activities.
- **Activity leader** - will be in charge of monitoring the assigned activity, ensuring its quality level and timeliness, and active participation of other partners.

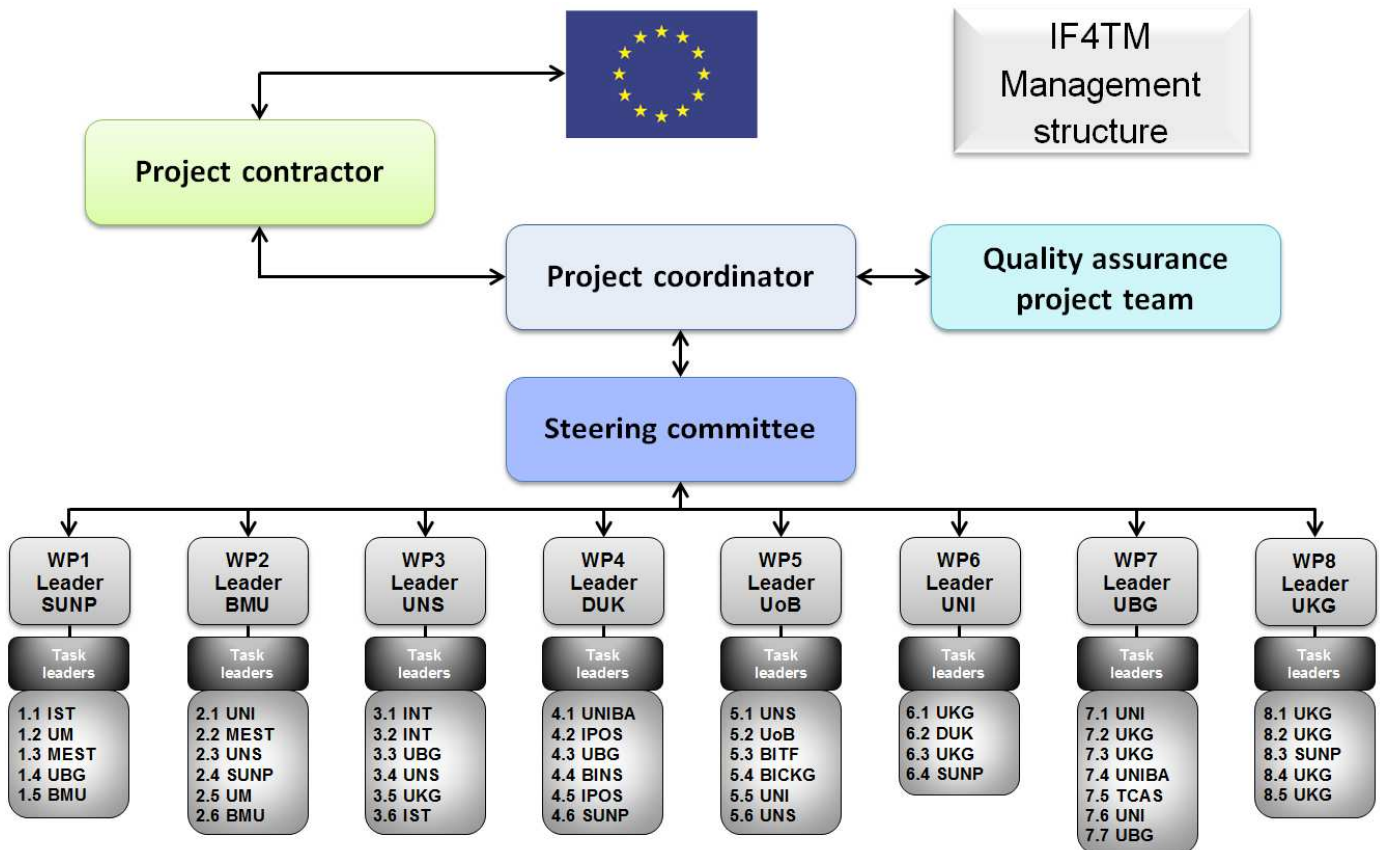


Figure 1 – Management structure of the IF4TM project



2. Co-financing principle

The principle of co-financing has been taken into account in the definition of the funding approach and in particular in defining the level of the unit costs used to calculate the grant of the project².

According to the European Union Financial Regulation grants shall always involve co-financing. This means that the resources which are necessary to carry out the project shall not be provided entirely by the EU contribution.

The grant awarded to CBHE projects is based on an estimated budget combining unit costs and actual costs and it corresponds to the European Union financial contribution to the project, as indicated in Art I.3 and Annex III of the Agreement. In application of the co-financing principle, this amount has to be considered as a contribution to cover part of the costs incurred by the beneficiary institutions to carry out the activities foreseen in the project, and should not be mistaken with the total costs of the project which also include co-financing from the partner institutions.

In practical terms, the implementation of the CBHE project may require other types of expenditures, not specifically foreseen and included in the budget of the grant (such as costs for dissemination, publishing, translation if not sub-contracted, overheads costs, bank fees etc.), that are supposed to be covered by co-financing. It is important to note that these expenditures covered by the co-financing will not be taken into account for the final calculation of the grant and therefore will not have any financial impact on it.

Contrary to the approach followed under previous programmes (in particular the Tempus, ALFA or Lifelong Learning programmes), the co-financing contribution provided by the partnership will not need to be justified or demonstrated at final report stage. Practically, this means that no proofs of expenditure or supporting documents will be required by the Agency. Nevertheless, at final report stage and for statistical purposes only, the partnership will be invited to provide an indication on the level and source of co-financing made available for the implementation of the project. The final financial statement will contain a dedicated section where co-financing will have to be reported.

Source: “Guidelines for the Use of Grants”, VERSION 02: 01 MAY 2016 (Section 1.4)

In the IF4TM budget sheet “Co-financing” part of application package, contribution of Serbian higher education institutions is presented in terms of co-financing in categories such as staff, travel, printing and publishing, overhead, etc. with appropriate justification.



3. Publicity obligations

In accordance with the Article I.10.8 and II.7 of the Grant Agreement, regarding the publicity and use of the relevant logo, the beneficiaries shall follow the instructions available on the Erasmus plus website on the following link:

https://eacea.ec.europa.eu/about-eacea/visual-identity_en .

3.1 Obligations of the beneficiaries

Information requirements: The beneficiaries shall inform the public, press and media of the action (internet included); which must, in conformity with Article II.7, visibly indicate “with the support of the Erasmus+ Programme of the European Union” as well as the graphic logos.

Where the action, or part of the action, is a publication, the mention and graphic logos shall appear on the cover or the first pages following the editor's mention.

Use of signs and posters: If the action includes events for the public, signs and posters related to this action shall be displayed.

Source Grant Agreement (Article I.10.9)

3.2 Erasmus+ logo



When displayed in association with another logo, the European Union emblem must have appropriate prominence.

Source: the Guidelines for the Use of the Grant (section 1.6.1)

The obligation to display the European Union emblem does not confer to the beneficiaries a right of exclusive use. The beneficiaries shall not appropriate the European Union emblem or any similar trademark or logo, either by registration or by any other means.

Under the conditions specified in previous paragraphs, the beneficiaries are exempted from the obligation to obtain prior permission from the Agency to use the European Union emblem.

Source Grant Agreement (Article II.7.1)

3.3 Disclaimer

Any communication or publication produced within the project should indicate that it presents only the view of its author(s) and not the view Agency and/or Commission.

Hence, any publication should mention the following sentence

"The European Commission support for the production of this publication does not constitute an endorsement of the contents which reflects the views only of the authors, and the Commission cannot be held responsible for any use which may be made of the information contained therein."

3.4 Penalties in the case of non-compliance with publicity obligations



The obligation to comply with the publicity provision set out in Article II.7 of the General Conditions constitutes a substantial obligation. Without prejudice to the right to terminate the grant, in case of failure to fulfill this obligation, the Agency may apply a 20% reduction of the grant initially provided for.

Source: Guidelines for the Use of Grant (Section 3.5.2.1)



4. Pre-existing rights and ownership and use of the results (including intellectual and industrial property rights)

IF4TM beneficiaries should have in mind the provisions of Grant Agreement in Articles I.7 and II.8 which define the rules for using the project results, including both intellectual and industrial property.

Although the Article II.8 of the Grant Agreement defines the ownership of the results by the beneficiaries, pre-existing industrial and intellectual property rights, rights of use of the results and of pre-existing rights by the Agency and/or the Union, in Article I.7 some additional obligations are described.

In addition to the provisions of Article II.8 of the General Conditions, if the beneficiaries produce materials under the scope of the project, such materials must be made available for the public, in digital form, freely accessible through the Internet under open licenses.

The beneficiaries must also warrant that the Agency and the Commission has the rights to:

- ✚ communicate the results of the action by any other types of communication not specified in the General Conditions,
- ✚ edit or re-write in another way the results of the action, including shortening, summarizing, modifying the content, correcting technical errors in the content,
- ✚ cut, insert meta-data, legends or other graphic, visual, audio or word elements in the results of the action,
- ✚ extract a part (e.g. audio and video files) of, divide into parts or compile the results of the action,
- ✚ prepare derivative works of the results of the action,
- ✚ translate, insert subtitles in, dub the results of the action in all official languages of EU,
- ✚ authorize or sub-licence the modes of exploitation set out above to third parties.

The Agency and the Commission shall have the rights of use specified in the General Conditions and set out above for the whole duration of the industrial or intellectual property rights concerned.

Source: Grant Agreement (Article I.7)



5. Penalties in the case of poor, partial or late implementation of the action

According to Article I.10.6 of the Agreement, the Agency may reduce the grant initially provided if the action is implemented poorly, partially or late.

Such penalties shall be applied in case the final technical report provides evidence that the project implementation was not addressed with the required attention and according to the terms laid down in the Agreement.

The final report and the outputs produced by the project (publications, conference papers, presentations etc.), will be assessed using a common set of quality criteria based on the same evaluation criteria and the same scoring scale as those used application stage: relevance (maximum 30 points); quality of the project (design and) implementation (maximum 30 points); quality of the project team and cooperation arrangements (maximum 20 points); and impact and sustainability (maximum 20 points).

The score will vary from 0 to 100, where 0 is the lower mark and 100 the highest.

Where the rating falls between 0 and 50, a reduction of the EU grant initially provided to the partnership will be implemented according to the following scale:

- ✚ 25% reduction if the final report scores at least 40 points and below 50 points;
- ✚ 35% reduction if final report scores at least 30 points and below 40 points;
- ✚ 55% reduction if the final report scores at least 20 points and below 30 points;
- ✚ 75% reduction if the final report scores below 20 points

The coordinator will have the possibility to react to the first evaluation of the final report and to provide supplementary information on the project implementation. In case the additional information will be deemed insufficient to illustrate a sound and objective oriented project implementation, the above mentioned penalties will be applied.

Source: Guidelines for the Use of the Grant, VERSION 02: 01 MAY 2016 (section 3.5.2.2)



FINANCIAL MANAGEMENT OF THE IF4TM PROJECT

6. Technical and financial reporting

6.1. Basic principles of reporting

Within IF4TM project three ways of reporting are planned:

- ✚ The **formal reporting** by the Coordinator including Intermediate and Final Reports, provides the necessary information to the Education, Audiovisual and Culture Executive Agency (EACEA) to assure them that our project is implemented according to the Grant Agreement provisions and Guidelines for the Use of the Grant.
- ✚ **Internal reporting** within the Consortium where beneficiaries inform the Coordinator about the technical progress on institutional implementation of the project (two partners' technical reports during the project) and partners' financial reports with declaration of expenses incurred accompanied with necessary supporting documents.
- ✚ **Reporting on realized different events** (info days, workshops, seminars, conference, meetings, trainings, etc.) by all beneficiaries prepared using the template provided in QCM Manual (Annex I) for posting on the project website and Facebook page.

All types of reporting will help to view the project's progress objectively within the Consortium but also for purpose of external monitoring that will be implemented by NEO and EACEA.

Verification of expenditures declared in partner financial reports are linked to the transfer of the part of Erasmus plus grant to partners from the Coordinator. Apart from partner financial report, partners will also prepare the technical report twice during the project implementation period. These reports will be the base for preparation of Intermediary report (at half of the project implementation period) and Final Report (at the end of the project) that will be delivered to EACEA by the Project Coordinator.

The reports should accurately reflect project partners progress (both technical and financial) during the reporting period, highlighting any key issues and providing justification for any deviations from the Project budget and Description of the project as set out in Annex III and Annex I (respectively) of the Grant Agreement.

It is recommended to prepare the reports by adding the information at the time when the activity takes place particularly for the reporting on the realized events where it is expected to have set of information and news in 15 days after the event.

6.2. Standards of all reports

All reports should be typed and should be in English. Copy of each report and supporting documents should be provided to the Coordinator and PST in timely manner:

- ✚ Financial report:



- cash flow tables – original excel files
 - financial statement table - original excel file
 - supporting documents (joint declarations, individual travel reports and project time sheets) as original hard copies, and
 - other supporting documents (agendas, list of participants, boarding passes, travel orders, or any other document proving mobility or participation in some activities) as hard copies.
- ✚ Technical report as electronic version of original word document.

Technical and financial report forms are provided in the Annexes 1 and Annex 2 of “Manual for Contractual and Financial Management”.

6.3. Reporting schedule

- ✚ Reports (two in total) prepared by the Coordinator to be delivered to EACEA:
 - Intermediate Report – 15th April 2017 and
 - Final report – 14th December 2018.
- ✚ Four partner financial reports
 - I Partner’s Financial Report – 1st March 2017;
 - II Partner’s Financial Report – 1st October 2017;
 - III Partner’s Financial Report – 1st May 2018;
 - IV Partner’s Financial Report – 15th November 2018;
- ✚ Two partner technical reports
 - I Partner’s Technical Report – 1st March 2017;
 - I Partner’s Technical Report – 15th November 2018

Each partner has to respect the reporting deadlines (also stated in the Partnership Agreement), and submit their reports with supporting documents on validation of expenditure to the project coordinator in due time as requested. If those are not submitted to the coordinator within the set deadline, they will not be included in the progress report of the project that coordinator is responsible to deliver to the Executive Agency.

6.4. Partner financial reports

Partner financial reports are linked to transfer of installments of the Erasmus plus grant by the Coordinator. Information contained in the reports will be reviewed by PST team as part of the quality control and monitoring process.

The Coordinator can submit Final report, as well as financial statements to the EACEA on behalf of all beneficiaries only based on inputs received from all partners. Therefore, in order to provide adequate information on the expenditure made within the project, each beneficiary has to submit a **partner financial report** to the Coordinator consisting of:



- ✚ **Financial statement (Annexes A2-1, A2-2, A2-3, A2-4, A2-5)** presenting the costs incurred during the reporting period.
- ✚ **Cash flow tables** with project expenses per categories (**Annexes A2-6, A2-7, A2-8**)
- ✚ **Supporting documents** (in the form described in Section 6.2 of this Manual).

When preparing the financial report, the beneficiaries are strongly advised to use the Excel file provided by the EACEA **Final Financial Statement (Annex A2-1, A2-2, A2-3, A2-4, A2-5 of the Manual)**, particularly the following sheets:

- ✚ Final Financial Statement (**Annex A2-1**)
- ✚ Staff costs table (**Annex A2-2**)
- ✚ Travel costs & costs of stay table (**Annex A2-3**)
- ✚ Equipment costs table (only for PC higher education institutions) (**Annex A2-4**)
- ✚ Co-financing table (**Annex A2-5**).

As the financial management tool that proved to be very efficient for monitoring and planning of expenses, the PST team and the Project Coordinator prepared the cash-flow tables for cost categories that beneficiaries have in their budget:

- ✚ Cash flow – staff table (**Annex A2-6**)
- ✚ Cash flow – travel costs and costs of stay table (**Annex A2-7**)
- ✚ Cash flow – equipment table (for PC higher education institutions only) (**Annex A2-8**)

The cash flow tables will allow partners to monitor their expenses on monthly basis. It is strongly recommended to use and update them as soon as the expense occurs, along with comments consisting of information on expense structure and reference numbers of supporting documents.

The detailed explanations on how to fill in those tables are given in the Annex 2 (A2-6 to A2-8).

The PST team will compile on regular basis all information obtained from the financial reports of the partners, but at least upon the receipt of the Reports.

The partner financial reports will be reviewed by the PST team and approved by the Coordinator, taking into consideration following assessment criteria:

- ✚ Conformity of the expenditures with the budget of the project;
- ✚ Eligibility of the expenditures;
- ✚ Correctness and completeness of all supporting documents;
- ✚ Correctness of applied exchange rates (where applicable);
- ✚ That any changes which occurred between budget categories are eligible and justified;
- ✚ Expenditures must be in conformity, including full eligibility, with the estimated Budget in accordance with Annex I of the Partnership Agreement.

In case that information in partner financial report is not complete or justified, the PST team will help and make recommendations on how this situation can be rectified prior to the final approval of the Report by the Coordinator. The Report approved in this way is the basis for the transfer of next installment to the partner institution.



6.5. Partners' technical reports

The Technical reports should provide the clear picture on the progress of project activities, time and quality of deliverables and results, to what extent the progress indicators are achieved, as well as introduction of changes into the Work plan (if any). For technical reporting, partners should use

- ✚ **Technical report (Annex 1)** describing the activities carried out and their results during the reporting period.

The Technical report is structured as follows:

- ✚ Statistics and indicators (Annex A1-1)
- ✚ Table of achieved/planned results (Annex A1-2)

The major part of the Technical report is consisted of the **Table of achieved/planned results** (one table per workpackage), with following describing elements:

- ✚ Activities carried out and indicators of achievement,
- ✚ Planned activities and indicators for progress,
- ✚ Any proposed changes (people involved, budget, remaining activities...).

Next page describes some fields of Table of achieved/planned results.



1. The title and reference number as indicated in the project proposal (already incorporated in the template in Annex A1-1)
2. The indicators of achievement and/or performance as indicated in your project proposal (already incorporated in the template in Annex A1-1)
3. Activity number as indicated in the project proposal (already incorporated in the template in Annex A1-1)
4. The activity title as indicated in the project proposal (already incorporated in the template in Annex A1-1)
5. State where and when the activity takes place
6. Provide a brief description of the activity carried out
7. Insert specific indicators (qualitative and quantitative) which can help to measure the achievement of the activity result
8. Insert specific indicators (qualitative and quantitative) which measure the achievements of the activity result
9. Describe any change to the activity plan described in the previous approved report

6.6. Partner Request for payment

The Coordinator has provided all partners with the appropriate form for issuing the transfer of funds to the partner institution – **Partner Request for Payment** (Annex 3 of the Manual). The partner has to submit Partner Financial Report whose approval will be the basis for issuing the next installment.

On the basis of verified expenses in the report and their approval by the Coordinator, amount of next installment of Erasmus plus grant will be defined/calculated by the Coordinator, in accordance with Article 5 of the Partnership Agreement.



7. Eligibility of costs

7.1 Eligible costs

As specified in Article II.19.1 of the Agreement, "Eligible costs" of the action are costs actually incurred by the beneficiary which meet the following criteria:

- ✚ they are incurred in the period set out in Article I.2.2 (from 15-10-2015 until 14-10-2018), with the exception of costs relating to the request for payment of the balance and the corresponding supporting documents referred to in Articles II.23.2 and I.4.1;
- ✚ they are indicated in the estimated budget of the action set out in Annex III;
- ✚ they are incurred in connection with the action as described in Annex I and are necessary for its implementation;
- ✚ they are identifiable and verifiable, in particular being recorded in the accounting records of the beneficiary and determined according to the applicable accounting standards of the country where the beneficiary is established and with the usual cost accounting practices of the beneficiary;
- ✚ they comply with the requirements of applicable tax and national legislation;
- ✚ they are reasonable, justified, and comply with the principle of sound financial management, in particular regarding economy and efficiency.

Source: Grant Agreement (Article II.19.1)

7.2 Type of eligible costs

As defined in Article I.3 of the Grant Agreement, the grant will take the form of:

- ✚ the reimbursement of 100% of the eligible costs **actually incurred** for the following categories of costs indicated in Annex III of the Grant Agreement: **equipment costs, costs for subcontracting**
- ✚ **unit contribution:** reimbursement of unit costs for the following categories of costs indicated in Annex III: **Staff Costs, Travel Costs and Costs of Stay**

Where, in accordance with Article I.3 (a) (i), the grant takes the form of the reimbursement of **actual costs**, the beneficiary must declare as eligible costs the costs it actually incurred for the action.

Source: Grant Agreement (Article II.20.1)



Where, in accordance with the Article I.3 (b), the grant takes the form of the reimbursement of **unit costs** or of a **unit contribution**, the beneficiary must declare as eligible costs or as requested contribution the amount obtained by multiplying the amount per unit specified in the Article I.3. (b) by the actual number of units used or produced.

Source: Grant Agreement (Article II.20.2)

7.3. Eligible expenses for Staff costs:

- ✚ This budget heading contributes to the cost of staff for all beneficiaries when they are **performing tasks which are directly necessary to the achievement of the objectives of the project**. These costs are supported on the basis of unit costs (see section 7.2).
- ✚ The unit costs to be applied for Staff costs are those defined in the table in Annex I* of the Guidelines for the Use of Grant and take into account two variables: the **type of staff category** and the **country** in which the staff member is employed. Each unit cost corresponds to an amount in Euro per working day per staff.
- ✚ The Staff category to be applied will **depend on the work to be performed** in the project and not on the status or title of the individual.
- ✚ The unit cost to be applied is the one corresponding to the **country** in which the staff member is employed, independently of where the tasks will be executed.
- ✚ The calculation of the grant is based exclusively on the application of the **unit costs** and is independent from the actual remuneration of the staff involved.
- ✚ The grant for Staff costs is calculated by **multiplying the unit cost** (corresponding to the applicable category of country and staff) **by the total number of days spent on the implementation** of the project per staff member. One working day is defined according to the applicable national legislation
- ✚ Declared working days per individual will **not exceed 20 days per month or 240 days per year**.

Source: Guidelines for the Use of Grants (Section 3.3.1.1 Staff Costs)

* Annex I of the Guidelines is given as Annex 5 of this Manual.

7.4. Eligible expenses for Travel costs and costs of Stay

This budget heading contributes to the costs of travel and stay for staff and students participating in activities directly related to the achievement of the project. These costs are covered on the basis of unit costs.

The unit costs to be applied are those defined in Annex I* of the Guidelines and are calculated taking into account the following variables: the travel distance (for travel costs) and the duration in days (for costs of stay).

Staff



Any category of staff (e.g. managers, RTT, technical and administrative staff) under official contract with the beneficiary institutions and involved in the project may benefit from financial support for travel and subsistence provided it is directly necessary to the achievement of the objectives of the project.

Travels are intended for the following activities:

Activities	Duration	Location of activity	Staff from PC-to PC	Staff from PC-to PgC	Staff from PgC-to PC	Staff from PgC-to PgC
Teaching / training assignments	Max. 3 months	Activities must take place in project beneficiaries' countries unless explicit prior written authorisation from the Agency	X	X	X	X
Training and retraining purposes			X	X	Not eligible	
Updating programmes and courses			X	X	X	X
Practical placements in companies, industries and institutions			X	X	Not eligible	
Project management related meetings			X	X	X	X
Workshops and visits for result dissemination purposes			X	X	X	X

PC = Partner Country

PgC = Programme Country

Students

Students (at undergraduate, graduate, post graduate and doctoral level) registered in one of the beneficiary institutions may benefit from a financial support for travel and subsistence provided it supports the achievement of the project objectives. Travels for students must take place in or under the supervision of a beneficiary organisation (e.g. in case of placement in an organisation that is not a beneficiary).

Students participating in short term activities linked to the management of the project may claim Costs of Stay corresponding to staff (for max. 1 week).

Student mobility must be targeted mainly at Partner Country students and intended for the following activities:



Activities	Duration	Location of activity	Student from PC- to PC	Student from PC-to PgC	Student from PgC-to PC	Student from PC to PgC
Study period	Min. 2 weeks - Max. 2 months	Activities must take place in or under the supervision of a beneficiary organisation	X	X	X	Not eligible
Participation in intensive courses			X	X	X	X
Practical placements, internships in companies, industries or institutions			X	X	X	Not eligible
Participation in short term activities linked to the management of the project (steering committees, coordination meetings, quality control activities, etc.).	Max. 1 week		X	X	X	X

PC = Partner Country

PgC = Programme Country

Specific rules for Travel Costs

The grant contributes to the travel of staff and students involved in the project, from their place of origin (home institution within the partnership) to the venue of the activity and return (including visa fee and related obligatory insurance, travel insurance and cancellation costs if justified).

Financial support will be provided only for travels that are directly related to the achievement of the objectives of the project.

Activities and related travels must be carried out in the project beneficiaries' countries. Any exception to this rule must be authorised by the Agency.

Please note that the unit costs for travel also cover cancellation costs. Therefore, it is strongly recommended to purchase travel tickets including cancellation insurance. Except for cases of "force majeure" or exceptional and duly justified cases, only unit costs for travel which actually took place can be reported and charged to the project. Prior written authorisation from the Agency is required in these cases.

For each participant, the grant is calculated by applying for each travel the unit cost corresponding to the applicable distance band. Each unit cost corresponds to a fixed amount in Euro per travel per person.

In order to apply the correct unit cost, the beneficiary must identify the travel distance of a one-way travel (from their place of origin - home institution within the partnership - to the venue of the activity) using the distance calculator supported by the European Commission (http://ec.europa.eu/programmes/erasmus-plus/tools/distance_en.htm).

Each unit cost applied will contribute to the costs of travel for the round trip, regardless of the expenses actually incurred.



In the context of a circular travel (e.g.: from a place of departure A to another location B, and then to a third location C, before returning directly to his/her place of departure A), the grant contribution to the travel costs will be calculated with the sum of:

- ✚ The unit cost amount corresponding to the distance band from A to B, and
- ✚ The unit cost amount corresponding to the distance band from B to C

No financial contribution will be granted for travels of less than 100 km.

Specific rules for Costs of Stay

Costs of stay can be reported for staff or students involved in the project for activities taking place outside the city of the participant's home institution. These costs contribute to the subsistence, accommodation, local and public transport such as bus and taxi, personal or optional health insurance.

Financial support will be provided only for costs of stay that are directly related to the achievement of the objectives of the project.

Activities must be carried out in the project beneficiaries' countries.

Any exception to this rule must be authorised by the Agency.

Unit costs to be applied for staff are different from unit costs for students:

- ✚ For each staff or student, the grant is calculated by applying the unit cost corresponding to the applicable duration of the activities (in days), up to the 14th day of activity. Each unit cost corresponds to a fixed amount in Euro per day per participant.

In order to apply the correct unit cost, the beneficiary must identify the duration in days of the activity (including the travel from their place of origin to the venue of the activity and vice-versa) and apply the corresponding unit costs as defined in Annex I* of these Guidelines.

Each unit cost applied will contribute to the costs of stay regardless of the expenses actually incurred.

Although no financial contribution will be granted for travels of less than 100 km, the corresponding costs of stay are eligible.

The calculation of the grant is based exclusively on the application of the unit costs and is independent from the actual costs incurred for the stay. The unit costs amounts defined to cover staff and students costs of stay will be used for determining the final eligible grant resulting from the analysis of the final report.

However, for the implementation of the activities during the grant agreement period, beneficiaries are free to define their own modalities for the reimbursement of the costs of stay incurred by their staff/students. **

Source: Guidelines for the Use of Grants, VERSION 02: 01 MAY 2016 (Sections 3.3.1.2.1 and 3.3.1.2.2)

* Annex I of the Guidelines is given as Annex A5 of this Manual

** Annex VI of the Partnership Agreement

7.5. Eligible expenses for equipment

This budget heading may be used to support the purchase of equipment on the condition that such equipment is not ineligible (see section 3.2.2 of the Guidelines) and is directly relevant to the objectives of the project.

This could include, for example, (e-)books and periodicals, fax machines, photocopying machines, computers and peripherals (including notebooks/laptops and tablets), software, machines and equipment for teaching purposes, laboratory supplies (teaching purposes), video-projectors (hardware) and video-presentations (software), television sets, installing/setting up of communication lines for internet connection, access to databases (libraries and electronic libraries outside the partnership) and clouds, equipment maintenance, insurance, transport and installation costs.

Considering the particular nature of the Capacity Building action under the Erasmus+ programme, the total purchase cost of the equipment will be taken into account and not the equipment's depreciation (see section 3.2.2 of the Guidelines). Therefore, equipment costs will be reimbursed on the basis of the eligible costs actually incurred.

Equipment is intended **exclusively** for the Partner Country Higher Education Institutions (as defined in the Programme Guide) which are included in the partnership where it must be installed as soon as practically possible.

The equipment must be recorded in the inventory of the institution where it is installed; this institution is the sole owner of the equipment. All equipment purchased with the Erasmus+ CBHE funds must bear an Erasmus+ sticker provided by the Agency.

The following costs are not considered eligible: equipment such as furniture, motor vehicles of any kind, equipment for research and development purposes, telephones, mobile phones, alarm systems and anti-theft systems.

In the event of purchase of equipment over €25.000, the provisions set under section 3.2.5 'Award of Contracts' of the Guidelines will apply.

Compared to the equipment as specified in the original application, minor adaptations in terms of quantity and product in the purchased equipment can be accepted without prior authorisation provided that the budgetary ceilings are respected, the corresponding equipment items are eligible, the modification can be justified and is related with the project objectives.

In case of significant changes of the equipment to be purchased compared to the equipment as specified in the original application, prior written authorisation from the Agency should be given during project implementation.

In any case of doubt the coordinator shall contact the Agency and ask for prior written approval based on clear justifications. It is however the responsibility of the coordinator to ensure that in case approval is given, the purchased items comply with the eligibility criteria since the verification of the eligibility of the specific equipment items will only be carried out following the submission of the final report.



The total expenses for Equipment may not exceed 30% of the maximum grant as specified in Article I.3 of the Agreement, excluding the 10% flexibility as referred in section 3.1.2 of the Guidelines.

Source: Guidelines for the Use of Grants (Section 3.2.6.1)

7.6. Ineligible costs

As specified in Articles I.10.4 and II.19.4 of the Grant Agreement the following costs are not considered eligible:

- ✚ equipment such as: furniture, motor vehicles of any kind, equipment for research and development purposes, telephones, mobile phones, alarm systems and anti-theft systems;
- ✚ costs of premises (purchase, rent, heating, maintenance, repairs etc.); please note that the rent of premises for short events is not concerned;
- ✚ costs linked to the purchase of real estate;
- ✚ expenses for activities that are not carried out in the project beneficiaries' country (see Annex IV of the Grant Agreement), unless an explicit prior written authorisation has been granted by the Agency;
- ✚ depreciation costs;
- ✚ return on capital;
- ✚ debt and debt service charges;
- ✚ provisions for losses or debts;
- ✚ interest owed;
- ✚ doubtful debts;
- ✚ exchange losses;
- ✚ costs of transfers from the Agency charged by the bank of a beneficiary;
- ✚ costs declared by a beneficiary in the framework of another action receiving a grant financed from the Union budget (including grants awarded by a Member State and financed from the Union budget and grants awarded by other bodies than the Agency for the purpose of implementing the Union budget);
- ✚ contributions in kind from third parties;
- ✚ excessive or reckless expenditure;
- ✚ deductible VAT (see section 3.2.3 of the Guidelines for the Use of Grant).

Source: "Guidelines for the Use of Grants" (Section 3.2.2)

8. Supporting documents



8.1. Supporting documents for staff cost

Beneficiaries do not need to justify the actual cost of the activity or to provide supporting documents on the actual amount spent. For activities funded with unit costs, the supporting documents will have to demonstrate that the volume and/or the nature of the activities actually implemented, justify the number of unit costs charged to the grant.

For the purpose of any **financial evaluation and/or audit**, beneficiaries will have to **retain with the project accounts** the following supporting documents:

- ✚ The existence of a formal contractual employment relationship between the employee and the employer. A **formal employment contract** is required.
- ✚ A duly filled-in **Joint Declaration** (Annex II* of these Guidelines) for each person employed by the project. The convention must be signed by the person performing the activity then countersigned and stamped by the person responsible (e.g. rector, dean) in the institution that employed this person. For staff performing different categories of tasks a separate convention must be signed for each type of activity.
- ✚ **Time-sheets**** have to be attached to each Joint declaration. They must be signed by the person concerned and countersigned by the person responsible in the institution that employed this person. They must indicate the following:
 - the project reference
 - the name of the person performing the tasks, his/her position and the staff category
 - the institution and the country where the person is employed
 - the number of days worked for the corresponding month and year
 - the description of the tasks performed, the outputs produced and the related work package.
- ✚ Any **material evidence** allowing to verify that the declared workloads correspond to actual activities/outputs (e.g. attendance lists for lectures given, tangible outputs / products, etc.).

Source: Guidelines for the Use of Grants (Section 3.3.1.1)

* Template is available as Annex A4-1 of this Manual

** Template is available in Annex A4-2 of this Manual

- ✚ If staff works on several projects simultaneously, please make sure that the time expressed in the Erasmus Plus time sheets does not overlap with time spent on other projects. This practice should ensure that time cannot be charged twice.
- ✚ If the Joint declaration relates to the activity that lasts for the period of several months, please attach time sheets for all the relevant months in this period.



8.2. Supporting documents for travel cost & costs of stay

Beneficiaries do not need to justify the actual cost of the activity or to provide supporting documents on the actual amount spent.

For activities funded with unit costs, the supporting documents will have to demonstrate that the volume and/or the nature of the activities actually implemented, justify the number of unit costs charged to the grant.

For the purpose of any financial evaluation and/or audit, beneficiaries will have to be able to justify/prove the following elements:

- ✚ The journeys actually took place.
- ✚ The journeys are connected to specific and clearly identifiable project-related activities.

The following supporting documents must be retained with the project accounts:

- ✚ A duly filled-in **Individual Travel Report** (Annex III* of the Guidelines).
- ✚ Supporting documentation will have to be attached to each travel report in order to **demonstrate the fact that the travel and the activity actually took place** (e.g. travel tickets, boarding passes with points of departure and destination, dates and name of the person travelling, invoices, receipts, proof of attendance in meetings and/or events, agendas, tangible outputs/products, minutes of meetings).

It will not be necessary to prove the actual cost of the travel.

Source: “Guidelines for the Use of Grants” (Section 3.3.1.2)

* Template is available as Annex A4-3 of this Manual

8.3. Supporting documents for equipment

For the purpose of any financial evaluation and/or audit, beneficiaries will have to retain with the project accounts the following supporting documents:

- ✚ **Invoice(s)** and **bank statement(s)** for all purchased equipment (please note that order forms, pro-forma invoices, quotations or estimates are not considered as proof of expenditure).
- ✚ When the threshold of EUR 25.000 is exceeded and below EUR 134.000, documentation on the **tendering procedure** and **three quotations** from different suppliers.
- ✚ When the threshold of EUR 134.000 is exceeded, documentation on the **tendering procedure** applied according to **national legislation**.
- ✚ Proof that the equipment is recorded in the **inventory** of the institution.

Source: Guidelines for the Use of Grants (Section 3.2.6.1)

8.4. Overview of supporting documents per budget heading

Reimbursement basis	Budget Headings	Documents to retain with project accounts	Documents to be sent with the Final report
ACTUAL COSTS	<i>Equipment</i>	<ul style="list-style-type: none"> ▪ Invoices ▪ Bank statements ▪ Tendering procedure for expenses exceeding 25.000€ ▪ Proof that the equipment is recorded in the inventory of the institution 	<ul style="list-style-type: none"> ▪ Invoices and three quotations from different suppliers for expenses exceeding 25.000€ ▪ Any prior authorisation from the Agency
	<i>Subcontracting</i>	<ul style="list-style-type: none"> ▪ Subcontracts ▪ Invoices ▪ Bank statements ▪ Tendering procedure for expenses exceeding 25.000€ ▪ Tangible outputs/products* 	<ul style="list-style-type: none"> ▪ Subcontracts, invoices and three quotations from different suppliers for expenses exceeding 25.000€ ▪ Any prior authorisation from the Agency
UNIT COSTS	<i>Staff</i>	<ul style="list-style-type: none"> ▪ Formal employment contract ▪ Staff convention ▪ Time sheets ▪ Salary slips* ▪ Agendas* ▪ Attendance / Participant lists* ▪ Tangible outputs/products* ▪ Minutes of meetings* 	<ul style="list-style-type: none"> ▪ No supporting documents should be sent with the Final report, except for any prior authorisation from the Agency
	<i>Travel and Costs of Stay</i>	<ul style="list-style-type: none"> ▪ Individual Travel Report (ITR) ▪ Invoices, receipts, boarding passes* ▪ Agendas* ▪ Attendance / Participant lists* ▪ Tangible outputs/products* ▪ Minutes of meetings* 	<ul style="list-style-type: none"> ▪ No supporting documents should be sent with the Final report, except for any prior authorisation from the Agency
<p>For all grants, a Certificate on the action's financial statements and underlying accounts ("Report of Factual Findings on the Final Financial Report – Type II") must be sent with the Final report (see Annex VII of the Agreement).</p>			

** Examples of supporting documents. Please note that in the case of unit costs this list cannot be exhaustive as it depends on the actual outputs of the project and the quality of the documentation provided. As a general rule, please keep all possible results to be able to show-case your activities.*

Source: Guidelines for the Use of Grants, VERSION 02: 01 MAY 2016, (Section 3.4)

8.5 Rules for designation of reference numbers for supporting documents



As the Coordinator should fill in the Final Financial Statement compiling all expenses from the beneficiaries and reference numbers of all supporting documents indicated in the Report must correspond to the progressive numbering, following rules for designation of reference numbers of supporting documents will be applied by the beneficiaries (illustrated in figure below).

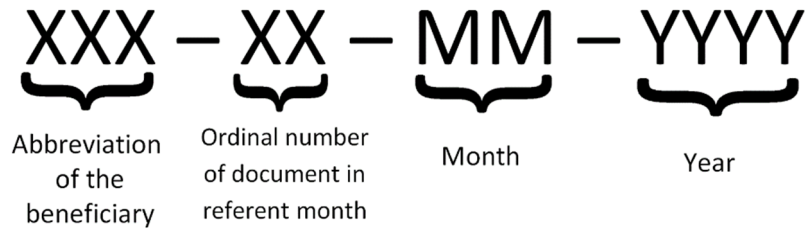


Figure 2 Designation of reference numbers for supporting documents

For example: first Joint declaration done for May 2016 at University of Kragujevac will be numbered as UKG-01-05-2016.

Order number of the document for the referent month will have progressive numbering for the same type of supporting documents (e.g. 01, 02, 03 for all Joint declarations in that month, and again 01, 02, 03 for all Individual travel reports in the same month).

ANNEX 1: Technical report



Structure of the Report:

A1-1 STATISTICS AND INDICATORS

A1-2 TABLE OF ACHIEVED / PLANNED RESULTS



A1-1 STATISTICS AND INDICATORS

This section aims to gather statistical data and indicators of performance for the period covered by this "Progress report on implementation of the action"

Main targets

YES

Please indicate whether your project has links, targets or objectives related to

Teacher training

Vocational Education and Training

Bachelor level

Master level

Doctorate level

Training and mobilities

(please note that this section DOES NOT INCLUDE data on students/staff mobilities covered by the Special Mobility Strand component)

Enter the code of the partner country concerned in the first lines and figures in the second and third:

Training of partner country staff and students

Number of academic staff from the partner country's Higher Education Institutions trained/retrained

Please indicate the number of teaching staff (professors, assistants with teaching tasks, etc.) trained and/or retrained to the date of the report submission

and the percentage this represents as compared to your objectives at the end of the project

(Country of origin: _____)

	Country Code:	Country Code:	Country Code:	Country Code:	Country Code:
Number Male					
Number Female					
% compared to objectives					

Number of non-academic staff from the partner country's Higher Education Institutions trained/retrained

Please indicate the number University administrative staff (librarians, staff from the International Office, IT specialists, etc.) trained to the date of report submission

and the percentage this represents as compared to your objectives at the end of the project

	Country Code:	Country Code:	Country Code:	Country Code:	Country Code:
Number Male					
Number Female					
% compared to objectives					

Number of staff from the partner country's non Higher Education Institutions trained/retrained

Please indicate the number of staff of non HEI (enterprises, NGOs, Chambers of Commerce, Government, local administration, etc.) trained to the date of report submission:

and the percentage this represents as compared to your objectives at the end of the project

	Country Code:	Country Code:	Country Code:	Country Code:	Country Code:
Number Male					
Number Female					
% compared to objectives					



Number of students from the partner countries who have attended programmes/courses developed in the framework of the project

Please indicate the number of students from the partner countries that have been trained and/or retrained in the programmes/courses developed by the project to the date of report submission: and the percentage this represents as compared to your objectives at the end of the project

	Country Code:	Country Code:	Country Code:	Country Code:	Country Code:
Number Male					
Number Female					
% compared to objectives					

Academic/administrative Staff mobility

Number of partner country – programme country mobility flows of more than 2 weeks

Please indicate the number of partner country staff mobility flows from the partner country to the programme country to the date of report submission: and the percentage this represents as compared to your objectives at the end of the project

(Country of origin: _____)

	Country Code:	Country Code:	Country Code:	Country Code:	Country Code:
Number Male					
Number Female					
% compared to objectives					

Number of programme country - partner country mobility flows of more than 2 weeks

Please indicate the number of programme country staff mobility flows from the programme country to the partner country to the date of report submission: and the percentage this represents as compared to your objectives at the end of the project

(Host country: _____)

	Country Code:	Country Code:	Country Code:	Country Code:	Country Code:
Number Male					
Number Female					
% compared to objectives					

Number of partner country – partner country mobility flows of more than 2 weeks

Please indicate the number of staff mobility flows within the same partner country to the date of report submission: and the percentage this represents as compared to your objectives at the end of the project

(Country of origin: _____)

	Country Code:	Country Code:	Country Code:	Country Code:	Country Code:
Number Male					
Number Female					
% compared to objectives					

And between two different partner countries:

and the percentage this represents as compared to your objectives at the end of the project

Number Male					
Number Female					
% compared to objectives					



Student mobility

Number of partner country – programme country mobility flows of more than 2 weeks

Please indicate the number of partner country student mobility flows from the partner country to the programme country to the date of report submission:

and the percentage this represents as compared to your objectives at the end of the project

(Country of origin: _____)

	Country Code:	Country Code:	Country Code:	Country Code:	Country Code:
Number Male					
Number Female					
% compared to objectives					

Number of programme country - partner country mobility flows of more than 2 weeks

Please indicate the number of programme country student mobility flows from the programme country to the partner country to the date of report submission:

and the percentage this represents as compared to your objectives at the end of the project

(Host country: _____)

	Country Code:	Country Code:	Country Code:	Country Code:	Country Code:
Number Male					
Number Female					
% compared to objectives					

Number of partner country – partner country mobility flows of more than two weeks

Please indicate the number of student mobility flows within the same partner country to the date of report submission:

and the percentage this represents as compared to your objectives at the end of the project

(Country of origin: _____)

	Country Code:	Country Code:	Country Code:	Country Code:	Country Code:
Number Male					
Number Female					
% compared to objectives					

And between two different partner countries:

and the percentage this represents as compared to your objectives at the end of the project

Number Male					
Number Female					
% compared to objectives					

Links to European Higher Education policies

Please indicate whether the project contributes to the introduction (/promotion) of one or more of the following elements in the Partner Country university(/ies).

Please include a brief comment for each of the ticked items.

	YES
Diploma supplement	
Adoption of a system based on three main cycles, undergraduate (Bachelor), postgraduate (Master) and Doctorate	
Introduction of double/multiple or joint degrees	
Establishment of an ECTS system	
Promotion of quality assurance procedures at institutional or national level	



Qualification frameworks	
Lifelong learning policies and approaches	
Modular curriculum structure	
New teaching and learning methods	
E-Learning	
University/Enterprise cooperation	
Links between the labour market and degree programmes	
Links with other EU education programmes	

EQUIPMENT:

TYPE OF EQUIPMENT ACQUIRED

list (multiple choice)

- a) books and pedagogic material
- b) audio-visual equipment
- c) Computers and software
- d) lab material
- e) others

CONSORTIUM MEETINGS

Estimated dates of consortium meetings until the end of the projects

- 1) dd/mm/yyyy Location
- 2) dd/mm/yyyy Location
- 3) dd/mm/yyyy Location



A1-2 TABLE OF ACHIEVED / PLANNED RESULTS

Erasmus+ KA2 Capacity Building in Higher Education

Annex V - Technical Implementation Report (Progress report on implementation of the action)

Project N. _____

page 12

EXAMPLE
USE ONE TABLE PER
WORK PACKAGE:
ADD AS MANY TABLES
AS NECESSARY

TABLE OF ACHIEVED / PLANNED RESULTS

<u>Reference number of the work</u>	<u>Indicators of achievement and or/performance as indicated in the project proposal</u>

Activities carried out to date for the achievement of this result:

Activity N°	Activity Title	Start date	End date	Place	Description of the activity carried out	Specific and measurable indicators of achievement
↑ Activity number as indicated in the project proposal ↓	↑ Insert the activity title as indicated in the project proposal ↓	↑ Start date ↓	↑ End date ↓	↑ State where and when the activity has taken/will take place ↓	↑ Provide a brief description of the activity ↓	↑ Insert specific indicators (qualitative and quantitative) which can help to measure the achievement of the activity result ↓
↑ Activity N° ↓	↑ Activity Title ↓	↑ Start date ↓	↑ End date ↓	↑ Place ↓	↑ Description of the activity to be carried out ↓	↑ Specific and measurable indicators of progress ↓

Changes that have occurred in this result since the original proposal:

Describe any change to the original activity plan described in the project proposal	Insert specific indicators (qualitative and quantitative) which help measure progresses towards achieving the required result
---	---



<u>Title and reference number of the work package (WP)</u>	WP1 - Benchmarking analysis of the policies and legal frameworks for establishing the third mission of universities
---	---

<u>Indicators of achievement and or/performance as indicated in the project proposal</u>	<p>Policies and legal frameworks in third mission activities in at least 5 EU countries and 10 EU universities presented and analysed by M5</p> <p>At least 20 policy makers in Serbia trained for third mission by M6</p> <p>Strategies and laws in RS analysed by M5</p> <p>Regulatory documents and structures analysed at 7 Serbian HEIs by M5</p> <p>Benchmarking analysis performed by M7</p>
---	---

Activities carried out to date to achieve this result:

Activity N°	Activity Title	Start date	End date	Place	Description of the activity carried out	Specific and measurable indicators of achievement
1.1	Analysis of EU policies and legal frameworks for establishing the third mission of universities					
1.2	Policy seminar on the third mission of universities					
1.3	Analysis of strategies and laws in the Republic of Serbia supporting the development of the third mission					
1.4	Analysis of the regulatory documents and existing structures for all three dimensions of third mission activities at seven Serbian HEIs					
1.5	Benchmarking analysis and recommendations					

Activities to be carried out to achieve this outcome (before the end of the project)



Activity N°	Activity Title	Start date	End date	Place	Description of the activity to be carried out	Specific and measurable indicators of progress
1.1	Analysis of EU policies and legal frameworks for establishing the third mission of universities					
1.2	Policy seminar on the third mission of universities					
1.3	Analysis of strategies and laws in the Republic of Serbia supporting the development of the third mission					
1.4	Analysis of the regulatory documents and existing structures for all three dimensions of third mission activities at seven Serbian HEIs					
1.5	Benchmarking analysis and recommendations					

Changes that have occurred in this result since the original proposal:

--

Please add as many tables as necessary.



Title and reference number of the work package (WP)	WP2 - Development of legal framework for establishing the third mission of Serbian universities
--	---

Indicators of achievement and or/performance as indicated in the project proposal	<p>Consensus on revision of legal framework reached by M8 New policies and law amendments in RS developed and adopted by M16 New/modified university regulatory documents developed and adopted by M20 5 CB trainings for 100 university staff by M25 Operational Manual published by M22 Final report on implementation of third mission by M36</p>
--	---

Activities carried out to date to achieve this result:

Activity N°	Activity Title	Start date	End date	Place	Description of the activity carried out	Specific and measurable indicators of achievement
2.1	Consensus meetings on revision of legal framework and polices in Republic of Serbia					
2.2	Development of new policies and law amendments for establishing the third mission of Serbian universities					
2.3	Development of new and modification of existing universities' regulatory documents in compliance with new policies and law amendments					
2.4	Capacity building programme for university staff (managers, trainers, administrators) for					



	implementation of the new legal framework for the third mission					
2.5	Development and publication of Operational manual for implementation of the third mission with recommendations to faculties/institutes/high schools					
2.6	Elaboration of Final report on implementation of third mission activities and their impact in Serbia					

Activities to be carried out to achieve this outcome (before the end of the project)

Activity N°	Activity Title	Start date	End date	Place	Description of the activity to be carried out	Specific and measurable indicators of progress
2.1	Consensus meetings on revision of legal framework and policies in Republic of Serbia					
2.2	Development of new policies and law amendments for establishing the third mission of Serbian universities					
2.3	Development of new and modification of existing universities' regulatory documents in compliance with new policies and law amendments					



2.4	Capacity building programme for university staff (managers, trainers, administrators) for implementation of the new legal framework for the third mission					
2.5	Development and publication of Operational manual for implementation of the third mission with recommendations to faculties/institutes/high schools					
2.6	Elaboration of Final report on implementation of third mission activities and their impact in Serbia					

Changes that have occurred in this result since the original proposal:

--

Please add as many tables as necessary.



Title and reference number of the work package (WP)	WP3 - Technology transfer and innovation dimension
--	--

Indicators of achievement and or/performance as indicated in the project proposal	<p>5 new and 2 upgraded INNO platforms operational by M12 At least 250 INNO suite users trained by M16 5 workshops organized (100 trainees) by M20 2 National competitions for best student ideas organized by M33 TRL level improved at 7 Serbian HEIs Operational Manual for PoC developed and publicized by M18 At least 10 research teams selected by M20 and supported in PoC and IP valuation</p>
--	---

Activities carried out to date to achieve this result:

Activity N°	Activity Title	Start date	End date	Place	Description of the activity carried out	Specific and measurable indicators of achievement
3.1	Setting-up five new and upgrading two existing INNO platforms for innovation management at seven Serbian HEIs					
3.2	Trainings for INNO platforms' users					
3.3	Five two-day Workshops "Methodology guide for innovation"					
3.4	National competition for (BSc, MSc, PhD) best ideas of students					
3.5	Improving TRL level through implementation of proof-of-concept programme for selected research ideas					
3.6	IP valuation and commercialization					



	strategy for selected research teams					
--	--------------------------------------	--	--	--	--	--

Activities to be carried out to achieve this outcome (before the end of the project)

Activity N°	Activity Title	Start date	End date	Place	Description of the activity to be carried out	Specific and measurable indicators of progress
3.1	Setting-up five new and upgrading two existing INNO platforms for innovation management at seven Serbian HEIs					
3.2	Trainings for INNO platforms' users					
3.3	Five two-day Workshops "Methodology guide for innovation"					
3.4	National competition for (BSc, MSc, PhD) best ideas of students					
3.5	Improving TRL level through implementation of proof-of-concept programme for selected research ideas					
3.6	IP valuation and commercialization strategy for selected research teams					

Changes that have occurred in this result since the original proposal:

--

Please add as many tables as necessary.



Title and reference number of the work package (WP)	WP4 - Continuing education dimension
--	--------------------------------------

Indicators of achievement and or/performance as indicated in the project proposal	At least 100 trainees trained in IP management by M33 At least 100 participants trained in market strategy by M33 At least 50 trainees completed startup trainings by M33 At least 10 study programmes improved with entrepreneurial and IP topics
--	---

Activities carried out to date to achieve this result:

Activity N°	Activity Title	Start date	End date	Place	Description of the activity carried out	Specific and measurable indicators of achievement
4.1	Defining integrative university approach in continuing education dimension					
4.2	Development and delivery of training on IP management					
4.3	Development and delivery of training on market strategy					
4.4	Development and delivery of start-up training					
4.5	Improving the faculties' study programmes including entrepreneurship and IP management topics					
4.6	Final assessment of continuing education activities and follow up recommendations					

Activities to be carried out to achieve this outcome (before the end of the project)



Activity N°	Activity Title	Start date	End date	Place	Description of the activity to be carried out	Specific and measurable indicators of progress
4.1	Defining integrative university approach in continuing education dimension					
4.2	Development and delivery of training on IP management					
4.3	Development and delivery of training on market strategy					
4.4	Development and delivery of start-up training					
4.5	Improving the faculties' study programmes including entrepreneurship and IP management topics					
4.6	Final assessment of continuing education activities and follow up recommendations					

Changes that have occurred in this result since the original proposal:

Please add as many tables as necessary.



Title and reference number of the work package (WP)	WP5 - Social engagement dimension
--	-----------------------------------

Indicators of achievement and or/performance as indicated in the project proposal	<p>Social engagement plans developed by M18 5 Creativity Centres established by M12 and equipped by M18 Workshops organized by CCs (100 trainees) by M30 At least 100 students involved in volunteering At least 25 services/projects with enterprises 10 Open Innovation campaigns</p>
--	--

Activities carried out to date to achieve this result:

Activity N°	Activity Title	Start date	End date	Place	Description of the activity carried out	Specific and measurable indicators of achievement
5.1	Defining universities' social engagement plans					
5.2	Establishing of five Creativity Centers in Serbia					
5.3	Development and delivery workshops on entrepreneurship and creative thinking for pupils and students					
5.4	Non-discipline volunteering by students					
5.5	Unlocking and mobilizing university resources to society and enterprises needs					
5.6	Open-innovation campaigns on INNO platforms in collaboration with enterprises					



Activities to be carried out to achieve this outcome (before the end of the project)

Activity N°	Activity Title	Start date	End date	Place	Description of the activity to be carried out	Specific and measurable indicators of progress
5.1	Defining universities' social engagement plans					
5.2	Establishing of five Creativity Centers in Serbia					
5.3	Development and delivery workshops on entrepreneurship and creative thinking for pupils and students					
5.4	Non-discipline volunteering by students					
5.5	Unlocking and mobilizing university resources to society and enterprises needs					
5.6	Open-innovation campaigns on INNO platforms in collaboration with enterprises					

Changes that have occurred in this result since the original proposal:

Please add as many tables as necessary.



<u>Title and reference number of the work package (WP)</u>	WP6 - Quality control and monitoring
<u>Indicators of achievement and or/performance as indicated in the project proposal</u>	QCM Manual developed by M3 Metrics for third mission defined by M20

Activities carried out to date to achieve this result:

Activity N°	Activity Title	Start date	End date	Place	Description of the activity carried out	Specific and measurable indicators of achievement
6.1	Developing quality control and monitoring manual					
6.2	Defining metrics for third mission activities					
6.3	Internal project monitoring					
6.4	Monitoring metrics for third mission activities					

Activities to be carried out to achieve this outcome (before the end of the project)

Activity N°	Activity Title	Start date	End date	Place	Description of the activity to be carried out	Specific and measurable indicators of progress
6.1	Developing quality control and monitoring manual					
6.2	Defining metrics for third mission activities					
6.3	Internal project monitoring					
6.4	Monitoring metrics for third mission activities					



Changes that have occurred in this result since the original proposal:

--

Please add as many tables as necessary.

<u>Title and reference number of the work package (WP)</u>	WP7 - Dissemination and exploitation
<u>Indicators of achievement and or/performance as indicated in the project proposal</u>	Dissemination and Exploitation plan defined by M6 Project visual identity designed by M2 Web-site launched by M3 Final report on 3rd mission activities 10 good practices 10 Info days (300 part.) Final conference proceedings

Activities carried out to date to achieve this result:

Activity N°	Activity Title	Start date	End date	Place	Description of the activity carried out	Specific and measurable indicators of achievement
7.1	Elaboration of Dissemination and exploitation plan					
7.2	Design of the project visual identity					
7.3	Design and upgrade the project web site					
7.4	Defining institutional policies to promote university third mission					



	dimensions and activities					
7.5	Good practices on Technology transfer and Innovation activities at Serbian universities					
7.6	10 Info days and other raising awareness events					
7.7	Final Conference on university third mission					

Activities to be carried out to achieve this outcome (before the end of the project)

Activity N°	Activity Title	Start date	End date	Place	Description of the activity to be carried out	Specific and measurable indicators of progress
7.1	Elaboration of Dissemination and exploitation plan					
7.2	Design of the project visual identity					
7.3	Design and upgrade the project web site					
7.4	Defining institutional policies to promote university third mission dimensions and activities					
7.5	Good practices on Technology transfer and Innovation activities at Serbian universities					
7.6	10 Info days and other raising awareness events					
7.7	Final Conference on university third mission					



Changes that have occurred in this result since the original proposal:

--

Please add as many tables as necessary.

<u>Title and reference number of the work package (WP)</u>	WP8 - Project overall management
---	----------------------------------

<u>Indicators of achievement and or/performance as indicated in the project proposal</u>	Manual for Contractual and Financial Management by M2 1 kick off and 6 SC meetings 2 reports to EACEA 51 Partners' Reports
---	---

Activities carried out to date to achieve this result:

Activity N°	Activity Title	Start date	End date	Place	Description of the activity carried out	Specific and measurable indicators of achievement
8.1	Elaboration of Manual for contractual and financial management					
8.2	Overall project management					
8.3	Local project management					
8.4	Steering Committee meetings					
8.5	Reporting					

Activities to be carried out to achieve this outcome (before the end of the project)



Activity N°	Activity Title	Start date	End date	Place	Description of the activity to be carried out	Specific and measurable indicators of progress
8.1	Elaboration of Manual for contractual and financial management					
8.2	Overall project management					
8.3	Local project management					
8.4	Steering Committee meetings					
8.5	Reporting					

Changes that have occurred in this result since the original proposal:

--

Please add as many tables as necessary.



ANNEX 2: Partner financial report

Structure of the Report:

A2-1 Final Financial Statement (cbhe_2015_-_annex_vi_-_financial_statements.xlsm, sheet Final Financial Statement)

A2-2 Staff costs table (cbhe_2015_-_annex_vi_-_financial_statements.xlsm, sheet Staff Costs)

A2-3 Travel costs & costs of stay table (cbhe_2015_-_annex_vi_-_financial_statements.xlsm, sheet Travel costs & costs of stay)

A2-4 Equipment costs table (cbhe_2015_-_annex_vi_-_financial_statements.xlsm, sheet Equipment costs)

A2-5 Co-financing table (cbhe_2015_-_annex_vi_-_financial_statements.xlsm, sheet Co-financing)

A2-6 Cash flow – staff table

A2-7 Cash flow – travel costs and costs of stay table

A2-8 Cash flow – equipment table (for PC higher education institutions only)



A2-1 Final Financial Statement

ANNEX VI - FINAL FINANCIAL STATEMENT										
Project Number								Co-financing (for information only)	0.00	
Budget Headings	1. Grant Awarded (in EUR)	2. Budget Spent (in EUR)								
1. Staff Costs	0.00	0.00								
2. Travel Costs	0.00	0.00								
3. Costs of Stay	0.00	0.00								
4. Equipment Costs	0.00	0.00								
5. Subcontracting Costs	0.00	0.00								
A. Grant for Project Activities	0.00	0.00								
B. Additional Grant for Special Mobility Strand	0.00	0.00								
Total Grant requested from the European Union (A + B)	0.00	0.00								
DISTRIBUTION OF THE GRANT BY ORGANISATION (in EUR)										
Partner N°	Name of Partner	Country	PR/PA	1. Staff Costs	2. Travel Costs	3. Costs of Stay	4. Equipment Costs	5. Subcontracting Costs	Total Costs (in EUR)	
P1				-	-	-	-	-	-	
P2				-	-	-	-	-	-	
P3				-	-	-	-	-	-	
P4				-	-	-	-	-	-	
P5				-	-	-	-	-	-	
P6				-	-	-	-	-	-	

(2)

(3)

- (1) Enter the Grant awarded to your institution per categories
- (2) Enter the name of your institution
- (3) Click arrow to select country



A2-2 Staff costs table

1. Staff Costs													
Total (EUR)											0.00		
Work Package	Partner N°	Name of Partner (to encode in the final financial statement sheet)	Country (to encode in the final financial statement sheet)	Supporting Document Ref.	Name of Staff Member	Staff category	Short description of tasks	From (dd/mm/yy)	To (dd/mm/yy)	Number of days (A)	Maximum Unit cost per day (in EUR) (B)	Total Calculated (in EUR) (A x B)	Check Data Encoding
(1)	(2)			(3)	(4)	(5)	(6)	(7)	(8)	(9)			
										0	0.00	0.00	Error

(1) Click arrow to select Work Package

- Preparation
- Development
- Quality Plan
- Dissemination/Exploitation
- Management

(2) Click arrow to select Partner Number

- P1 University of Kragujevac
- P2 University of Belgrade
- P3 University of Novi Sad
- P4 University of Niš
- P5 State University of Novi Pazar
- P6 Technical College of Applied Sciences in Zrenjanin
- P7 University of Brighton
- P8 Danube University Krems
- P9 University of Lisbon
- P10 Ministry of Education, Science and Technological Development
- P11 Intellectual Property Office
- P12 Business innovation centre Kragujevac



Co-funded by the
Erasmus+ Programme
of the European Union



P13 Business Technology Incubator of Technical Faculties Belgrade

P14 Business Incubator Novi Sad

P15 Intraneta solution

P16 Belgrade Metropolitan University

P17 University of Bari Aldo Moro

P18 University of Maribor

(3) Please encode supporting document reference

(4) Insert Name of staff member

(5) Please click arrow to select Category of tasks

Manager

Teacher/Trainer/Researcher

Technical Staff

Administrative Staff

(6) Please encode short description

(7) Please encode date (format must be dd/mm/yy)

(8) Please encode date (format must be dd/mm/yy)

(9) Please encode number of days (whole number only)



A2-3 Travel costs & costs of stay table

2-3. Travel Costs & Costs of Stay																	
Total Travel Costs (in EUR)		0.00															
Total Costs of Stay (in EUR)		0.00															
Work Package	Partner N°	Name of Partner (to encode in the final financial statement sheet)	Country (to encode in the final financial statement sheet)	Supporting Document Ref.	Name of the Person travelling	Student/ Staff	City and Country of Departure	City and Country of Destination	Departure Date (dd/mm/yy)	Return Date (dd/mm/yy)	Number of days for Costs of Stay	Travel Distance (in KM)	Maximum Travel Costs calculated (EUR)	Maximum Costs of Stay calculated (EUR)	Total calculated (EUR)	Check Data Encoding	
1	2										10	11			0.00	0.00	Error

(1) Click arrow to select Work Package

- Preparation
- Development
- Quality Plan
- Dissemination/Exploitation
- Management

(2) Click arrow to select Partner Number

- P1 University of Kragujevac
- P2 University of Belgrade
- P3 University of Novi Sad
- P4 University of Niš
- P5 State University of Novi Pazar
- P6 Technical College of Applied Sciences in Zrenjanin
- P7 University of Brighton
- P8 Danube University Krems
- P9 University of Lisbon
- P10 Ministry of Education, Science and Technological Development
- P11 Intellectual Property Office
- P12 Business innovation centre Kragujevac
- P13 Business Technology Incubator of Technical Faculties Belgrade



Co-funded by the
Erasmus+ Programme
of the European Union



P14 Business Incubator Novi Sad
P15 Intraneta solution
P16 Belgrade Metropolitan University
P17 University of Bari Aldo Moro
P18 University of Maribor

- (3) Please encode supporting document reference
- (4) Please encode the name of the person travelling
- (5) Click arrow to select category

Student
Staff

- (6) Please encode city and country of departure
- (7) Please encode city and country of destination
- (8) Please encode date (format must be dd/mm/yy)
- (9) Please encode date (format must be dd/mm/yy)
- (10) Please encode number of days (max 60 days for student and max 90 days for staff – whole number only)
- (11) Please encode distance in kilometers (no decimals)



A2-4 Equipment costs table (for PC countries only)

Add Row				Delete Row				Duplicate Row				Infoeuro				4. Equipment Costs											
Total (EUR)												0.00															
Work Package	Partner N°	Name of Partner benefiting from the equipment (to encode in the final financial statement sheet)	Country (to encode in the final financial statement sheet)	Supporting Document Ref.	Invoice Date (dd/mm/yy)	Nature, type and specifications of the item	Providing company	VAT and Taxes charged to the project?	Amount indicated on the invoice	Currency indicated on the invoice	Exchange Rate Used	Amount charged to the project (in EUR)	Check Data Encoding														
1	2			3	4	5	6	7	8	9		10															
												0.00	Error														

(1) Click arrow to select Work Package

- Preparation
- Development
- Quality Plan
- Dissemination/Exploitation
- Management

(2) Click arrow to select Partner Number

- P1 University of Kragujevac
- P2 University of Belgrade
- P3 University of Novi Sad
- P4 University of Niš
- P5 State University of Novi Pazar
- P6 Technical College of Applied Sciences in Zrenjanin
- P7 University of Brighton
- P8 Danube University Krems
- P9 University of Lisbon
- P10 Ministry of Education, Science and Technological Development
- P11 Intellectual Property Office
- P12 Business innovation centre Kragujevac
- P13 Business Technology Incubator of Technical Faculties Belgrade



Co-funded by the
Erasmus+ Programme
of the European Union



P14 Business Incubator Novi Sad
P15 Intraneta solution
P16 Belgrade Metropolitan University
P17 University of Bari Aldo Moro
P18 University of Maribor

- (3) Please encode supporting document reference
- (4) Please encode date (format must be dd/mm/yy)
- (5) Please encode nature, type and specifications
- (6) Please encode the name of the company providing the service
- (7) Please click arrow to inform if amount of VAT has been charged
 - Y (yes)
 - N (no)
- (8) Please encode the amount indicated on the invoice
- (9) Please encode the currency indicated on the invoice (even in EUR)
- (10) Please encode total amount charged to the project (2 decimals only)



A2-5 – Co-financing table

Co-financing (for information only)							
Total (EUR)		0.00					
Partner N°	Name of Partner (to encode in the final financial statement sheet)	Country (to encode in the final financial statement sheet)	Budget Heading*	Source of Co-financing**	Nature, type and specifications of the item***	Amount (in EUR)	Check Data Encoding
1			2	3	4	5	0.00 Error

(1) Click arrow to select Partner Number

- P1 University of Kragujevac
- P2 University of Belgrade
- P3 University of Novi Sad
- P4 University of Niš
- P5 State University of Novi Pazar
- P6 Technical College of Applied Sciences in Zrenjanin
- P7 University of Brighton
- P8 Danube University Krems
- P9 University of Lisbon
- P10 Ministry of Education, Science and Technological Development
- P11 Intellectual Property Office
- P12 Business innovation centre Kragujevac
- P13 Business Technology Incubator of Technical Faculties Belgrade
- P14 Business Incubator Novi Sad
- P15 Intraneta solution
- P16 Belgrade Metropolitan University
- P17 University of Bari Aldo Moro
- P18 University of Maribor



Co-funded by the
Erasmus+ Programme
of the European Union



- (2) Please click arrow to select budget heading
e.g. Equipment, staff costs, travel costs and/or costs of stay, printing & publishing
- (3) Please encode source of co-financing
e.g. governmental grant, organisation/institution`s own resources
- (4) Please encode the nature, type and specifications of the item
e.g. Printing course material (200 copies), renting conference premises (2 days, 100 participants) etc.
- (5) Please encode amount (2 decimals only)



A2-6 Cash flow – staff table

WP	Cat.1		Cat.2		Cat.3		Cat.4		Total Staff costs (€)	Exchange rate*	Amount spent up to this reporting period	Amount spent in this report						1 reporting period 1st October 2015 - 1st October 2016	
	Number of working days	Salary rate (per day) applied* (€)	Number of working days	Salary rate (per day) applied* (€)	Number of working days	Salary rate (per day) applied* (€)	Number of working days	Salary rate (per day) applied* (€)				Oct 2015	Nov 2015	Dec 2015	Jan 2016	Feb 2016	Mar 2016	Total amount spent to date	Balance remaining
Preparation	0	108	2	80	0	57	0	45	160							0.00	160.00		
Development	0	108	2	80	0	57	0	45	160							0.00	160.00		
Development	0	108	5	80	0	57	0	45	400							0.00	400.00		
Development	0	108	5	80	0	57	0	45	400							0.00	400.00		
Development	0	108	2	80	20	57	50	45	3550							0.00	3,550.00		
Quality	5	108	2	80	0	57	0	45	700							0.00	700.00		
Diss/Exp	5	108	2	80	0	57	0	45	700							0.00	700.00		
Management	6	108	0	80	0	57	6	45	918							0.00	918.00		
	16		20		20		56												
									6988	0.00	0.00	0.00	0.00	0.00	0.00	0.00	0.00	6,988.00	

NOTE:

- ✚ Expense should be inserted in the form of sum of units multiplied with the unit amount (=3*108)
- ✚ For every inserted expense please add the comment with a referent number of corresponding supporting document (UKG-01-12-15)



A2-7 Cash flow – travel costs and costs of stay table

WP	Destination		Number of people	Planned budget (GA)				Declared budget in EACEA report				Reporting period 15 October 2015 - 14 October 2018										
	Country Code	Short name		N° of Days	Total Travel costs	Total Costs of stay	Total travel costs and costs of stay	N° of Days	Total Travel costs	Total Costs of stay	Total travel costs and costs of stay	Feb 2018	Mar 2018		Apr 2018		Total amount spent to date		Balance remaining (planned - declared)		Balance remaining (declared - actual)	
													(S)	(T)	(S)	(T)	(S)	(T)	(S)	(T)	(S)	(T)
Preparation 1.1	UK	UOB	1	4	275	480	755			0	0						0.00	0.00	275.00	480.00	0.00	0.00
Preparation 1.1	AT	DUK	1	4	180	480	660			0	0						0.00	0.00	180.00	480.00	0.00	0.00
Preparation 1.1	PT	IST	1	4	360	480	840			0	0						0.00	0.00	360.00	480.00	0.00	0.00
Preparation 1.1	IT	UNIBA	1	4	275	480	755			0	0						0.00	0.00	275.00	480.00	0.00	0.00
Preparation 1.1	SI	UM	1	4	180	480	660			0	0						0.00	0.00	180.00	480.00	0.00	0.00
Preparation 1.2	RS	UBG	2	2	0	0	0			0	0						0.00	0.00	0.00	0.00	0.00	0.00
Development 2.1	RS	UBG	2	1	0	0	0			0	0						0.00	0.00	0.00	0.00	0.00	0.00
Development 2.3	UK	UOB	1	5	275	600	875			0	0						0.00	0.00	275.00	600.00	0.00	0.00
Development 2.3	PT	IST	1	5	360	600	960			0	0						0.00	0.00	360.00	600.00	0.00	0.00
Development 2.3	AT	DUK	1	5	180	600	780			0	0						0.00	0.00	180.00	600.00	0.00	0.00
Development 2.3	IT	UNIBA	1	5	275	600	875			0	0						0.00	0.00	275.00	600.00	0.00	0.00
Development 2.3	SI	UM	1	5	180	600	780			0	0						0.00	0.00	180.00	600.00	0.00	0.00
Development 2.4	UK	UOB	1	5	275	600	875			0	0						0.00	0.00	275.00	600.00	0.00	0.00
Development 2.4	AT	DUK	1	5	180	600	780			0	0						0.00	0.00	180.00	600.00	0.00	0.00
Development 2.4	PT	IST	1	5	360	600	960			0	0						0.00	0.00	360.00	600.00	0.00	0.00
Development 2.4	IT	UNIBA	1	5	275	600	875			0	0						0.00	0.00	275.00	600.00	0.00	0.00
Development 2.4	SI	UM	2	5	360	1200	1560			0	0						0.00	0.00	360.00	1,200.00	0.00	0.00
Development 3.4	AT	DUK	3	7	540	1155	1695			0	0						0.00	0.00	540.00	1,155.00	0.00	0.00
Development 3.4	RS	UKG	6	1	1080	330	1410			0	0						0.00	0.00	1,080.00	330.00	0.00	0.00
Development 3.4	RS	UKG	2	1	360	240	600			0	0						0.00	0.00	360.00	240.00	0.00	0.00
Development 3.5	AT	DUK	2	6	360	1440	1800			0	0						0.00	0.00	360.00	1,440.00	0.00	0.00
Management 3.6	PT	IST	2	6	720	1440	2160			0	0						0.00	0.00	720.00	1,440.00	0.00	0.00
Management 5.2	UK	UOB	2	5	550	1200	1750			0	0						0.00	0.00	550.00	1,200.00	0.00	0.00
Management 8.4	RS	UKG	2	3	360	720	1080			0	0						0.00	0.00	360.00	720.00	0.00	0.00
Management 8.4	RS	UBG	1	2	0	0	0			0	0						0.00	0.00	0.00	0.00	0.00	0.00
Management 8.4	RS	SUNP	1	2	180	240	420			0	0						0.00	0.00	180.00	240.00	0.00	0.00
Management 8.4	RS	UNI	1	2	180	240	420			0	0						0.00	0.00	180.00	240.00	0.00	0.00
					8320	16005	24,325.00			0	0	0.00	0.00	0.00	0.00	##	0.00	0.00	8,320.00	16,005.00	0.00	0.00

NOTE:

- ✚ Expense should be inserted in the form of sum of units multiplied with the unit amount for stay cost plus travel unit cost (=3*120+550)
- ✚ For every inserted expense please add the comment with a referent number of corresponding supporting document (UKG-01-12-15)



A2-8 Cash flow – equipment table

			Exchange rate*							I reporting period 1st October 2015 - 1st October 2016	
			Amount spent up to this reporting period	Amount spent in this report						Total amount spent to date	Balance remaining
				Oct 2015	Nov 2015	Dec 2015	Jan 2016	Feb 2016	Mar 2016		
EQUIPMENT											
Dev	Equipment for teaching purposes - Magnetic whiteboard	100.00	0.00							0.00	100.00
Dev	Equipment for teaching purposes - Interactive touch table	850.00	0.00							0.00	850.00
Dev	Computers and peripherals - Projector	300.00	0.00							0.00	300.00
Dev	Computers and peripherals - Mini pocket projector	200.00	0.00							0.00	200.00
Dev	Computers and peripherals - 12x PC Computer	6,000.00	0.00							0.00	6,000.00
Dev	Communication lines - WiFi router	30.00	0.00							0.00	30.00
Dev	Laboratory equipment - 1x 3D printer	1,000.00	0.00							0.00	1,000.00
Dev	Consumables material for 3D printer - Equipment for teaching purposes	800.00	0.00							0.00	800.00
Dev	Laboratory equipment - 1x 3D scanner	1,000.00	0.00							0.00	1,000.00
		10,280.00	0.00	0.00	0.00	0.00	0.00	0.00	0.00	0.00	10,280.00

NOTE: Expense should be inserted as actual cost expressed in EUR. For every inserted expense please add the comment with a referent number of corresponding supporting document



ANNEX 3: Partner Request for payment

Partner Request for payment

[Date of the request for payment]

For the attention of
University of Kragujevac
Att. Prof. Dr. Vesna Mandic
Jovana Cvijica bb
34000 Kragujevac
Serbia

Reference number of the Grant Agreement: **561655-EPP-1-2015-1-RS-EPPKA2-CBHE-SP**

Title of the grant Contract: **Institutional framework for development of the third mission of universities in Serbia**

Name and address of the Project Partner:

name of project partner

address of project partner

Request for payment number: **number/year**

Dear Sir/Madam,

I hereby request **number** (e.g. **1st**, **2nd**,...) installment of the Erasmus+ grant contribution under the Grant Agreement mentioned above, and based on the Partnership Agreement.

The amount requested is **amount** €

The payment should be made to the bank account of our institution defined in Annex VI of the Partnership Agreement.

Stamp

Signature of the beneficiary legal representative

Position:

Name:.....



ANNEX 4: Supporting documents

A4-1 Joint Declaration

A4-2 Timesheet

A4-3 Individual Travel Report



A4-1 Joint declaration

ANNEX II

JOINT DECLARATION

Ref. No..... Project No.
The reference number must correspond to the progressive numbering indicated in the financial statements of the final report

FROM
Hereinafter "the Institution"*

AND Name:
Address:
Hereinafter "the Staff member"*

THE INSTITUTION AND THE STAFF MEMBER HEREBY CERTIFY THAT:

- The Institution is a member of the partnership for the above-mentioned project.
- The Staff member is either:
 - employed by the Institution and is part of its payroll system YES/NO
 - or
 - a natural person ** assigned to the project on the basis of a contract against payment YES/NO
- The Institution and Staff member agree that the Staff member has worked on this project and performed the following duties during the project's eligibility period.

dd/mm/yy		dd/mm/yy	
FROM		TO	

Please describe the outputs produced (short overall indication since detailed information has to be given in the accompanying time-sheet):

- Please complete the following information.

Staff category (Manager / Researcher, Teacher, Trainer / <u>Technician</u> / Administrative staff)	
Country of the Institution	
Number of days worked and charged to the project (according to time-sheet)	

5. This declaration does not alter in any way the employment conditions/assignment already existing between the Institution and the Staff member and is established solely for the purpose of justifying the Staff costs that the Institution will charge to the *Erasmus+ Capacity Building in Higher Education* grant.

Done in Date

Name

Function

Institution

Staff member name

Signature and Stamp of the Institution

Signature of the Staff member

**The declaration must be signed by the person concerned, then signed and stamped by the person responsible in the Institution where this person worked for the project. The Institution must be a member of the partnership.*

***A natural person (individual) can be assigned to the action also on the basis of e.g. a civil contract, a free-lance contract, an expert contract, a service contract with self-employed person ("in house consultant) or a secondment to the Institution against payment. The costs of such natural persons working under the action may be assimilated to the costs of personnel, if:*
(i) *the person works under conditions similar to those of an employee (in particular regarding the way the work is organised, the tasks that are performed and the premises where they are performed); and*
(ii) *the result of the work belongs to the Institution (unless exceptionally agreed otherwise); and*
(iii) *the costs are not significantly different from the costs of staff performing similar tasks under an employment contract within the institution*



A4-3 Individual Travel Report

ANNEX III - INDIVIDUAL TRAVEL REPORT for travel costs and costs of stay

To be filled in by each participant

In case of circular/multiple travels, please fill in separate Individual Travel Reports.

Ref. No.....Project No.
The reference number must correspond to the progressive numbering indicated in the financial statements in the final report

(1) PERSONAL DATA

Surname: Forename:

Nationality:

Home institution:

Staff position/student year of study at home institution:

(2) TYPE OF ACTIVITY (Tick as appropriate)

STAFF	STUDENTS
<input type="checkbox"/> Teaching/training assignment	<input type="checkbox"/> Study period
<input type="checkbox"/> Training and retraining purposes	<input type="checkbox"/> Participation in intensive courses
<input type="checkbox"/> Updating programmes and courses	<input type="checkbox"/> Practical placements, internships in companies, industries or institutions
<input type="checkbox"/> Practical placements in companies, industries and institutions	<input type="checkbox"/> Participation in short term activities linked to the management of the project
<input type="checkbox"/> Project management related meetings	
<input type="checkbox"/> Workshops and visits for result dissemination purposes	

(3) DETAILS OF THE TRAVEL

PERIOD*	From (Depart date) (dd/mm/yy)	To (Return date) (dd/mm/yy)
PLACE OF DEPARTURE**	HOME INSTITUTION	
	COUNTRY..... CITY.....	
PLACE OF DESTINATION/ LOCATION OF ACTIVITY	HOST INSTITUTION	
	COUNTRY..... CITY.....	
TRAVEL DISTANCE***	Km	

*Please indicate period of travel from departure to return to place of origin
** If different from Home institution please enclose authorisation from the Agency
***Travel distance in Km (One-way travel) using distance calculator: http://ec.europa.eu/programmes/erasmus-plus/tools/distance_en.html from place of departure to location of activities

(4) DETAILS OF THE ACTIVITY

DATES (excluding travel)	From (date):..... To (date):
DESCRIPTION OF ACTIVITY(IES) PERFORMED (brief description of the activities performed)	
.....	
.....	
.....	
.....	

SIGNATURE OF THE PARTICIPANT

I hereby declare that I have been carrying out the above-mentioned activities.

Date:.....

Signature:



Annex 5 Unit costs for staff, travel and costs of stay defined by EACEA

UNIT COSTS FOR STAFF

	Manager	Teacher/Trainer /Researcher	Technician	Administrative staff
	AMOUNTS IN EURO PER DAY			
Austria	294	241	190	157
Italy, United Kingdom	280	214	162	131
Portugal, Slovenia	164	137	102	78
Serbia	108	80	57	45

UNIT COSTS FOR TRAVEL

Distance band	Unit cost per participant
Between 100 and 499 KM	180 EUR
Between 500 and 1999 KM	275 EUR
Between 2000 and 2999 KM	360 EUR

UNIT COSTS FOR Stay

	STAFF Unit cost per day per participant	STUDENT Unit cost per day per participant
Up to the 14 th day of activity	120 EUR	55 EUR

Source: "Guidelines for the Use of Grants" (Annex I)